

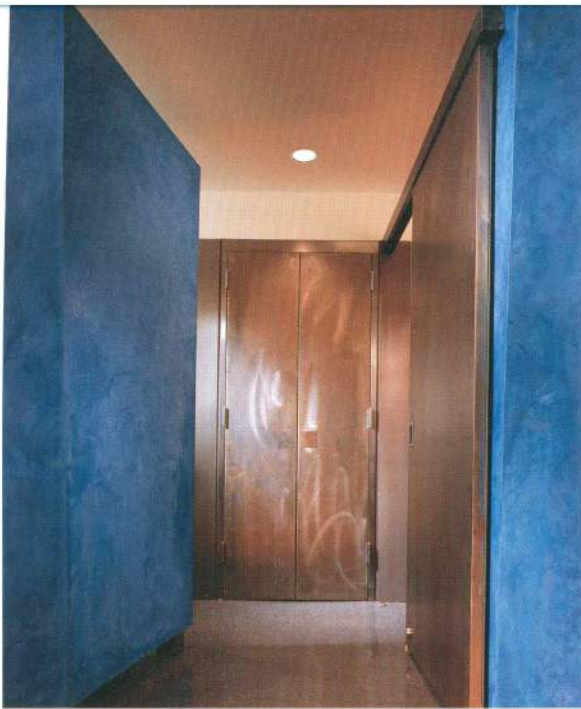
The image shows a gallery space with green walls and a glass display case. In the top left, a circular recessed light fixture is visible. The display case at the bottom contains four colorful, textured objects: a yellow one, a blue one, a dark green one, and a red one. The text 'colors' is written in a large, white, lowercase serif font in the upper right, with 'architecture in detail' in a smaller, white, lowercase sans-serif font below it. In the bottom right corner, the names 'oscar riera ojeda and james mccown' and 'photography by paul warchol' are printed in a white, lowercase sans-serif font.

colors

architecture in detail

*oscar riera ojeda and james mccown
photography by paul warchol*





Resolution: 4 Architecture, Simint Fashion Corporation Showroom, New York, 1993. A curving blue wall is canted 5 degrees on the Z axis and serves as the main organizing element. It draws visitors down the corridor toward the showroom, compressing first against the blue glass walls of the offices opposite and then seeming to recede, as if to present the main space as an extension of the city sky beyond the windows.

