

CHD

CONTEMPORARY RESIDENTIAL ARCHITECTURE & DESIGN

THE SCHINDLER HOUSE

DESIGNS FOR LIVING

DEBORAH DEARING & BEN GILES DISCUSS

ARCHITECT IN PROFILE

STEVE KENNER
CAROLINE PIDCOCK
TONE WHEELER

180+ PAGES OF CONTEMPORARY HOME DESIGN

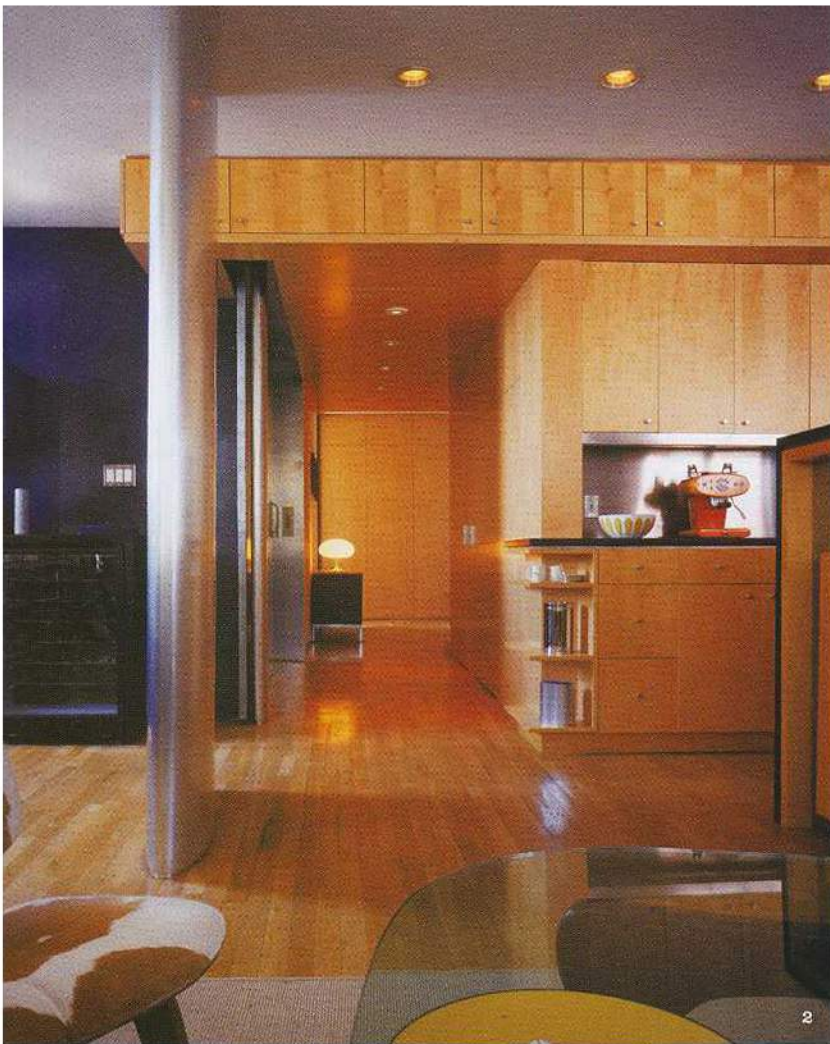
Universal
No. 5.1 \$9.95*
NZ \$11.95
(Both incl. GST)*
10
ISSN 1448-501X
9 771448 501008
www.completehome.com.au





NEW YORK'S MOODY RESIDENCE

Hudson River views and stunning maple woodwork define this spacious Manhattan apartment



ORIGINALLY TWO SEPARATE APARTMENTS but now merged into one large and airy loft, the Moody Residence is essentially a new condominium located in the West Village of Manhattan. The design strategy of the project was to open the apartment's living area and create a unique, stylish, functional and comfortable space.

The apartment divides into two sides; this is residual from the previous two apartments that now make up the present condominium. These two sides were divided into the public living space of the apartment and the private side. The public space includes the living room, kitchen, dining and media room. The private side includes three bedrooms and a study.

The residence rotates around a central kitchen, which adheres to a circulatory core as well as opening into the larger living space. This allows the owner to combine cooking and easy entertaining within the apartment, while remaining at the centre of all the living spaces.

Dividing as well as connecting the kitchen and living areas is a freestanding island. This 'island space' conceptually folds out to incorporate

a clever custom-designed dining table. The connecting living area remains open, providing stunning views of the Hudson River. The open living space also allows in natural light.

The master bedroom suite closes itself off from the public parts of the apartment through a storage unit comprised of built-in cabinetry and closets. This allows greater privacy as well as separation of public and private residency within the apartment.

Wrapping the central core of the kitchen, stunning maple woodwork ties the spaces of the

apartment together while defining movement throughout the apartment. This woodwork is a strong statement throughout, linking rooms and creating the essence of the apartment with the sleek lines and honey-colour hues of the maplewood. Circulation moves between the two sides of the apartment, united by an entry gallery and closed off from the public elevator by a sliding zinc-coated front door.

Widely published and highly acclaimed, Resolution: 4 Architecture was responsible for the Moody Residence. Comprised of partners Joseph Tanney and Robert Luntz, recent recognition for Resolution: 4 Architecture includes an AIA award for an office for a Manhattan-based Internet company; a residence for architect Peter Eisenman and his family; the 20th Annual Interiors Awards, Best Large Office, McCann-Erickson 16th Floor; as well as the winning entry in the NCR International Design Competition for an amphitheatre in Columbia, South Carolina. -CHD-



Circulation moves between the two sides of the apartment, united by an entry gallery and closed off from the public elevator by a sliding zinc-coated front door



PROJECT DETAILS

RESOLUTION: 4 ARCHITECTURE

Architects: Joseph Tanney, Robert Luntz
Suite 1902, 150 West 28th Street,
New York, New York 10001

Tel: +212 675 9266, Fax: +212 206 2944

Project Architect: Clay Collier, Ana Dobrovoljac

Contractor: J. Lauda Company, Inc

Photography: Paul Warchol

1 The public side of the apartment consists of an open communal space containing the kitchen, dining, and living zones, and the media room beyond 2 A lowered wooden ceiling plane compresses the entry gallery, creating the connection between public and private zones of the apartment 3 The master bathroom features a walk-in shower with body sprays for two and a view of the Hudson River 4 A custom media room chair is carved from built-in cabinetry 5 The residence rotates around a central kitchen 6 The master bedroom suite closes itself off from the public areas through built-in closets



