

# dwell

Great Design in  
the Napa Valley

AT HOME IN THE MODERN WORLD

## Perfect Getaways

From Idyllic Hideaways  
to Sunny Beach Retreats



July/August 2003  
\$4.95 U.S. / \$5.95 Canada

[www.dwellmag.com](http://www.dwellmag.com)



**Get Grilling!**  
5 Outdoor Grills to Fire Up

The Future of Home Design  
is on page 73

In January 2003, we introduced the Dwell Home Design Invitational, which presented a unique challenge to 16 designers and architects: Design an innovative prefabricated house for \$200,000, one that bucks the status quo and embraces all the benefits that prefab construction has to offer.

In April, we received 16 inspired designs. Soon after, our jury met with the Dwell Homeowners-to-be, Nathan Wieler and Ingrid Tung, to select the winning entry. The jury considered a variety of criteria in order to make its determinations, ranging from aesthetics to adherence to the budget to construction viability to potential for mass production. After much heated but constructive debate, they chose our winner. Groundbreaking is slated for late summer 2003. We will continue to update you on the Dwell Home's progress in our pages and on a new website dedicated to the project: [www.thedwellhome.com](http://www.thedwellhome.com).

We are now pleased to present 16 exciting proposals for the Dwell Home, and thrilled to announce the winner of the Dwell Home Design Invitational...

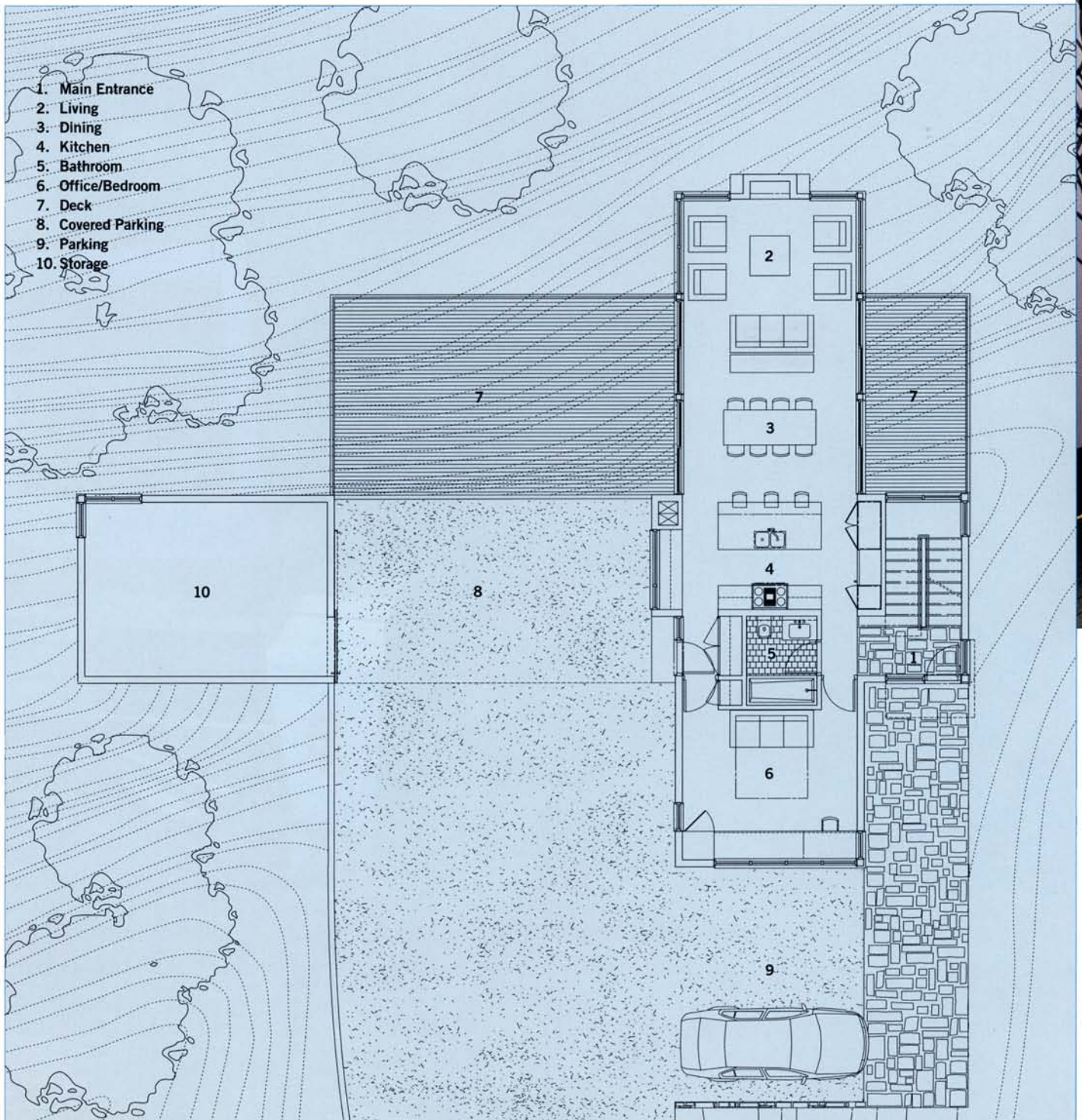


the dwell home

Design Portfolio Presented by

Microsoft  
Office:mac  
v.x

Special thanks to our Dwell Home sponsors: Birkenstock, CaesarStone, Fisher & Paykel, Herman Miller for the Home, Home Director, Jenn-Air, Loewen, Maharam, Microsoft® Office for Mac, Modern Fan Co., Neoporte, Sears, Volkswagen, and West Elm; and to the Dwell Home jury: Frank Anton, Ray Kappe, Joseph Rosa, and Sarah Susanka.



Resolution 4: Architecture incorporates materials like horizontal cedar siding, bamboo flooring, and aluminum-clad windows, demonstrating that prefab can transcend its less-than-stellar reputation.

And the Winner is...

## Resolution: 4 Architecture

**“As labor costs continue to rise in America, it is becoming increasingly difficult to afford the high cost of building a quality custom home,”** says architect Joseph Tanney. In response, Tanney and Robert Luntz, principals at architectural firm Resolution: 4 Architecture, created Modern Modular, a housing concept that leverages existing construction methodologies of prefabrication to create mass customized, modular homes at a reasonable cost.

Modern Modular houses are based on prefabricated, factory-produced, easy-to-transport modular units, minimizing the cost of production. Final structures are designed from the inside out using a series of standard “modules of use.” Modern Modular envisions dwellings composed of these modules, which have the potential to be configured in a variety of ways, meaning limitless home design possibilities, each specific to client and site.

The Modern Modular design proposed for the Dwell Home represents just one of many configuration

options—a program specific to Nathan Wieler and Ingrid Tung—and careful consideration of the Pittsboro, North Carolina, site. “It’s impossible that one home is right for everybody,” says Tanney. “Modern Modular is about establishing a system that can be modified for each individual client.”

By merging conventional wood framing with advanced technologies that allow for mass customization, Resolution: 4 Architecture hopes not only to transform the traditional relationship between architect and client in home construction, but also to change the future of residential architecture itself. “Modern Modular offers an option for a modern, affordable home that could aesthetically transform the American domestic landscape,” says Tanney. “The challenge that lies ahead is execution and implementation. We believe we have the strategy; now we need to execute it—and the Dwell Home offers the perfect opportunity to show that the system works.”

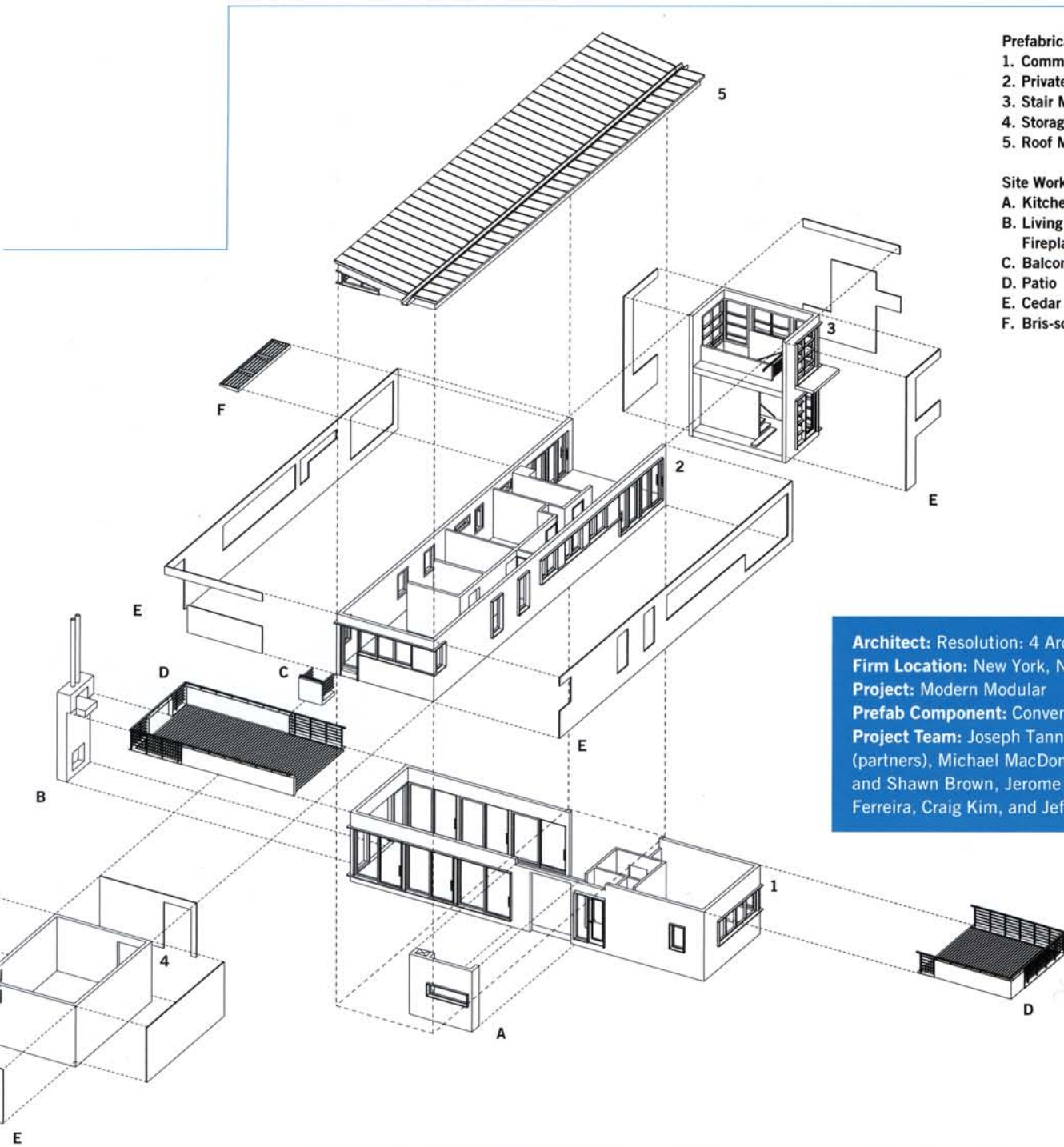


**Prefabricated Construction**

- 1. Communal Module
- 2. Private Module
- 3. Stair Module
- 4. Storage Module
- 5. Roof Module

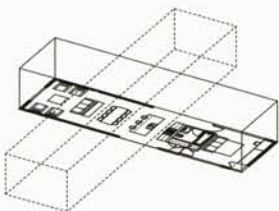
**Site Work**

- A. Kitchen Saddlebag
- B. Living Room  
Fireplace/Chimney
- C. Balcony
- D. Patio
- E. Cedar Siding
- F. Bris-sole!

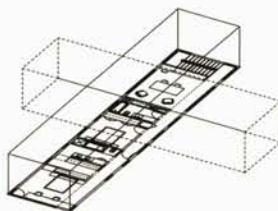


**Architect:** Resolution: 4 Architecture  
**Firm Location:** New York, NY  
**Project:** Modern Modular  
**Prefab Component:** Conventional wood framing  
**Project Team:** Joseph Tanney and Robert Luntz (partners), Michael MacDonald (team leader), and Shawn Brown, Jerome Engelking, Catarina Ferreira, Craig Kim, and Jeffrey Straesser

**Communal**



**Private**



+

=

**The Dwell Home**

