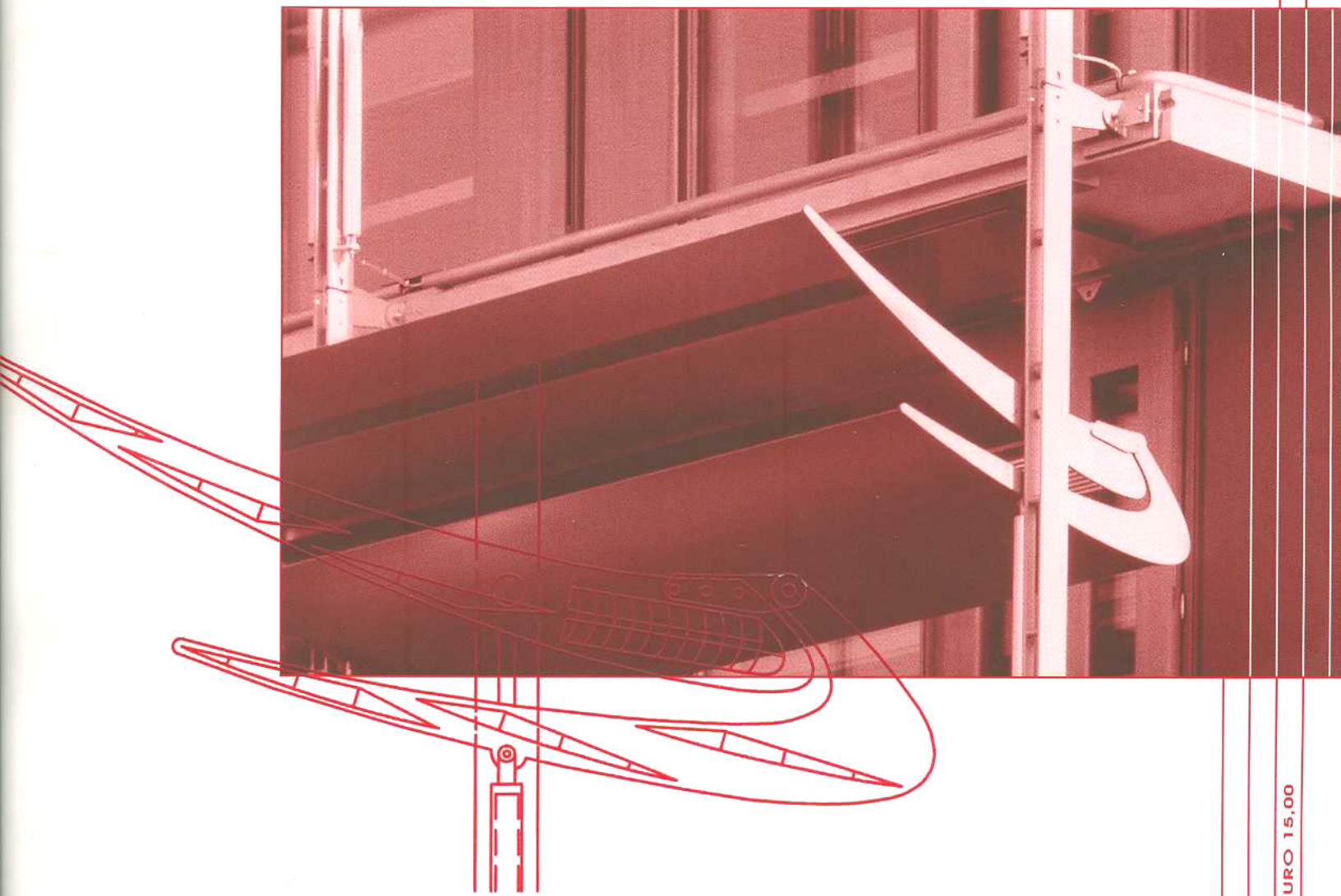
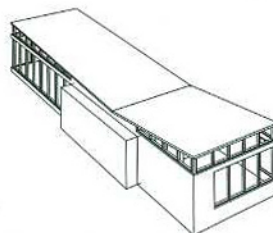
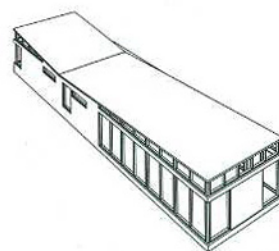
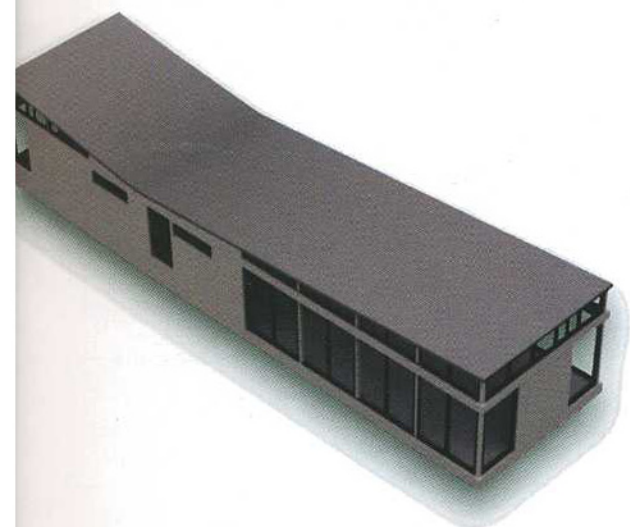


■ ■ ■ **THE PLAN**

ARCHITECTURE & TECHNOLOGIES IN DETAIL



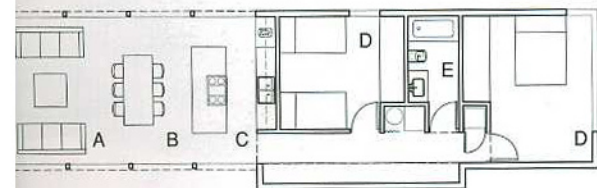
ABITAZIONI PREFABBRICATE MODULARI
CUSTOM PREFABRICATED MODULAR HOMES
RESOLUTION: 4 ARCHITECTURE - NEW YORK



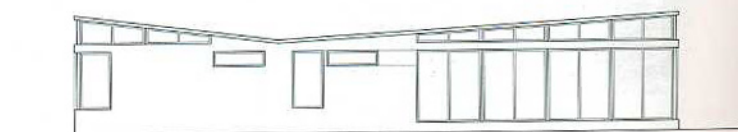
MODULO STANDARD
STANDARD BAR

PIANTA PRIMO PIANO - FUORI SCALA
 FIRST FLOOR PLAN - OUT OF SCALE

- A SALOTTO - LIVING
- B TINELLO - DINING
- C CUCINA - KITCHEN
- D CAMERA - BEDROOM
- E BAGNO - BATHROOM



■ PROSPETTO LATERALE - FUORI SCALA
 SIDE ELEVATION - OUT OF SCALE



Modern Modular è stato concepito come studio sulla possibilità di modificare la progettazione dell'abitazione moderna sfruttando i vantaggi economici, ambientali e strutturali di nuove ed affidabili tecniche costruttive. I progressi nella tecnologia costruttiva delle abitazioni ha trasformato il modo in cui vengono realizzate, avvalendosi di tecniche basate sulla prefabbricazione. La progettazione di case, comunque, non è ancora cambiata così significativamente da avvantaggiarsi delle nuove possibilità offerte dalla prefabbricazione e dalla costruzione modulare. Modern Modular cerca di conciliare l'industria edilizia residenziale con le esigenze ed i desideri dei proprietari di case del 21° secolo, attraverso una profonda comprensione del ruolo centrale della casa nella vita quotidiana.

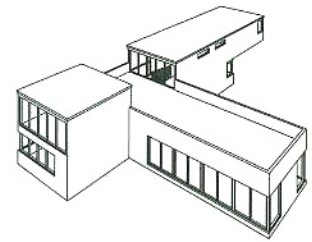
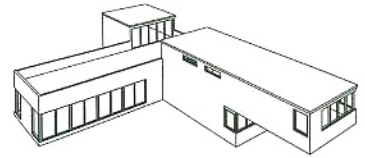
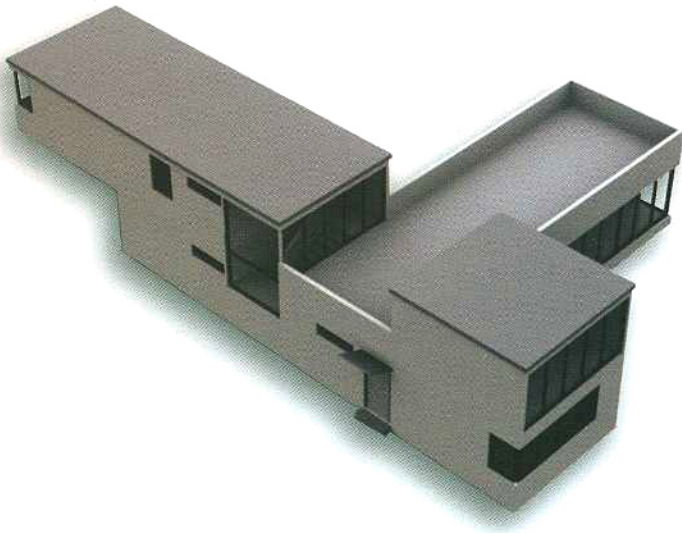
Le case sono state concepite focalizzandosi sulla creazione di una vasta gamma di soluzioni residenziali in grado di soddisfare le varie esigenze di una clientela ampia e diversificata. Ricerca e

Concentrandosi sulle unità abitative modulari, le case sono completamente adattabili ai requisiti richiesti da differenti ubicazioni e situazioni climatiche ed ai bisogni dei diversi proprietari. Le abitazioni sono facilmente ampliabili, in modo da assecondare l'eventuale aumento dei residenti.

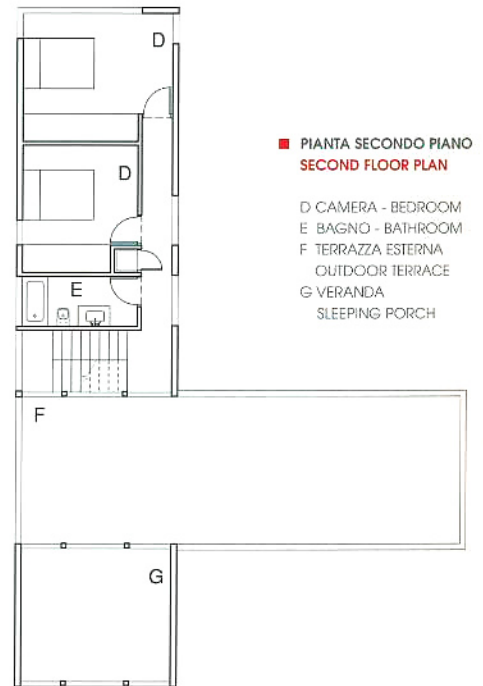
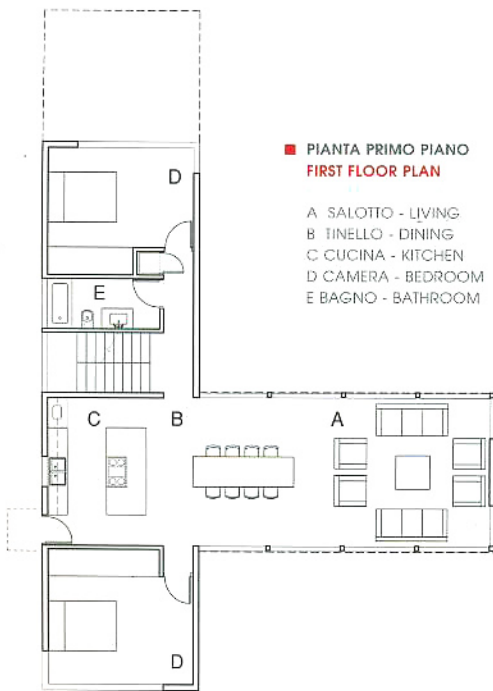
La costruzione prefabbricata ha molti vantaggi: qualità ed efficienza costruttiva, costi contenuti e velocità di cantiere. Ne risulta una casa progettata con cura e più accessibile dal punto di vista economico, concepita grazie ad un costante interesse verso lo sviluppo dello stile moderno.

Si tratta di abitazioni adattabili al cliente basate su una linea di produzione di unità modulari. Le tipologie predefinite sono composte da una serie di moduli standard, in modo da minimizzare le spese e massimizzare le possibili soluzioni offerte al cliente.

Utilizzando la stessa struttura adattabile a disposizione del personal computer, Modern Modular trasforma il tradizionale rapporto tra



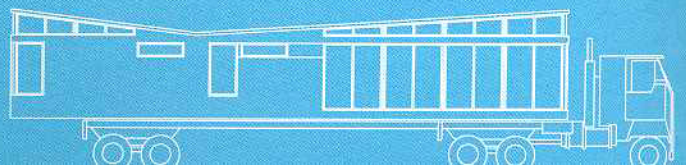
MODULO A DUE PIANI
TWO-STORY BAR

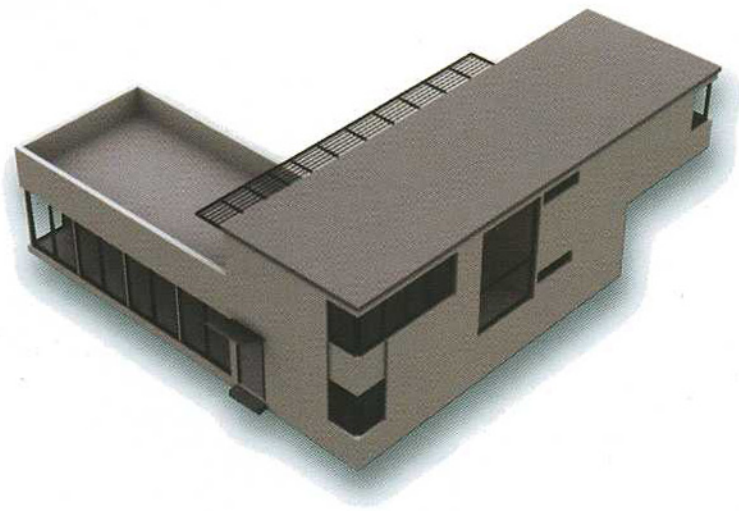
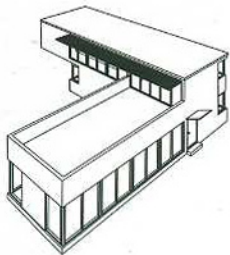
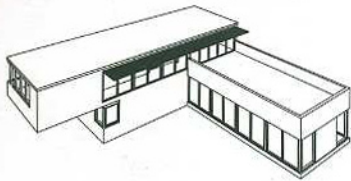


CREDITI / CREDITS

MODERN MODULAR
Custom Prefabricated Homes 2002

RESOLUTION: 4 ARCHITECTURE
Joseph Tanney, Robert Luntz
Project Architect: Michael MacDonald
Project Team: Shawn Brown, David Freeland





MODULO A "L" TWO-BAR "L"



Modern Modular was conceived as a study in how modern home design can be transformed to take advantage of the economical, environmental, and structural benefits of new and proven construction techniques. Advances in home construction technology have transformed the way in which houses are made, by taking advantage of factory assembly-derived construction techniques.

The design of houses, however, has not changed significantly to take advantage of the possibilities of prefabrication and modular construction. Through a keen understanding of the central role that the American house plays in daily life, Modern Modular seeks to allow the home building industry to meet the needs and desires of homeowners of the 21st century.

Homes are designed with a focus on creating a wide range of living solutions capable of being adapted to meet the varying needs of a broad and diverse audience. Through extensive research and design, Modern Modular provides a full line of houses to fit different uses, be it a solitary residence, weekend home, or full-family house. Through a focus on modular living units, houses are fully

customizable to meet functional requirements of different locations and climates, and the specific needs of different households. Homes are easily expandable and transformed, allowing homes to grow and adapt to its residents.

Prefabricated construction has many advantages, both in the quality and efficiency of building, as well as in the cost and speed of construction. The result is a more affordable and better-designed home, created through an unsurpassed commitment to enduring modern design and style.

Houses are created customized for the individual based on a production line of modular units. Predefined typologies are formed from a series of standard modules, minimizing cost of production and maximizing possible combinations available for the consumer. Using the same customizable structure available in purchasing personal computers, Modern Modular transforms the traditional relationship between architect and client in home construction. Homebuyers have limitless options of customization based on the predetermined line of homes, and additions to these standard types.